

Report on the pyrotechnical waste from Rail Cutting, Dublin (15E0185)

Paul Rondelez

Macroom, Co. Cork

27 January 2019

Description and Interpretation

A small piece (16g) of rather dense vitrified material with no inclusions (Fig. 1) was found in layer (C143) at the site of Rail Cutting (15E0185). This layer represented material dumped along the railway until its abandonment.

Based on the lack of inclusions the piece is interpreted as the waste of iron smithing. The piece could be the waste of a nearby forge or derived from other smithing activities.

Recommendation for future research

Analyses, chemical or otherwise, would unlikely result in further insights into the above material and is not recommended.

Recommendation for retention

The assemblage should be, for retention purposes, be considered as:

Low Significance: The potential information value from future research is very limited.

Figure

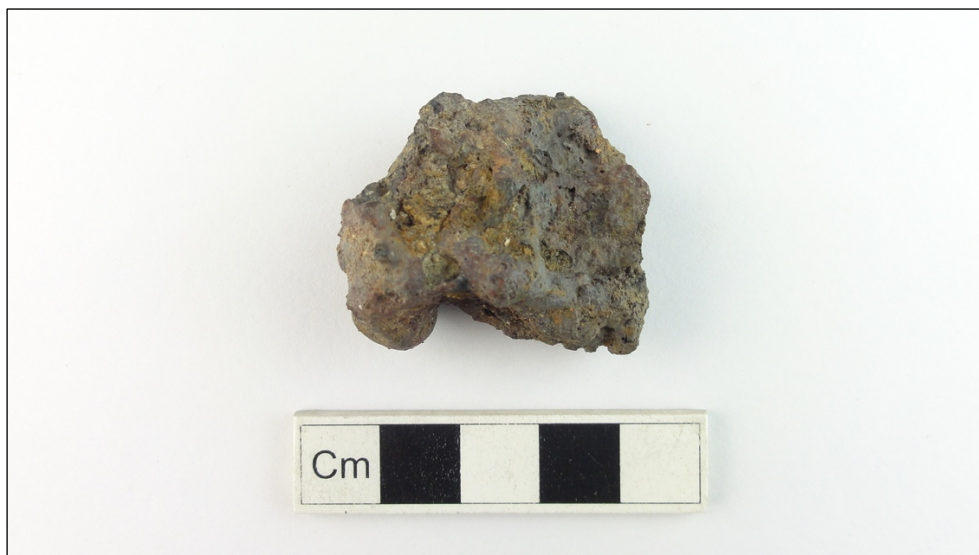


Fig. 1. Likely smithing slag from silty clay layer C143